

TIRUMALA ESTATE KALHER, THANE

A STORY OF STOREYS
TIRUMALA ENTERPRISES... CREATING LANDMARKS
SINCE LAST DECADE

- Renowned name in the Thane & Bhiwandi area
- Vast experience of developing many projects over a span of 10 years
- Tirumala Enterprises is a one of the biggest & known builders in Bhiwandi
- We have 1000 + happy residents and 2000+ under construction flats. So you can trust us & our quality
- Aggressive future development plans with stringent time-lines
- Always offers worth living with its diverse amenities and complete ambience for you and your family

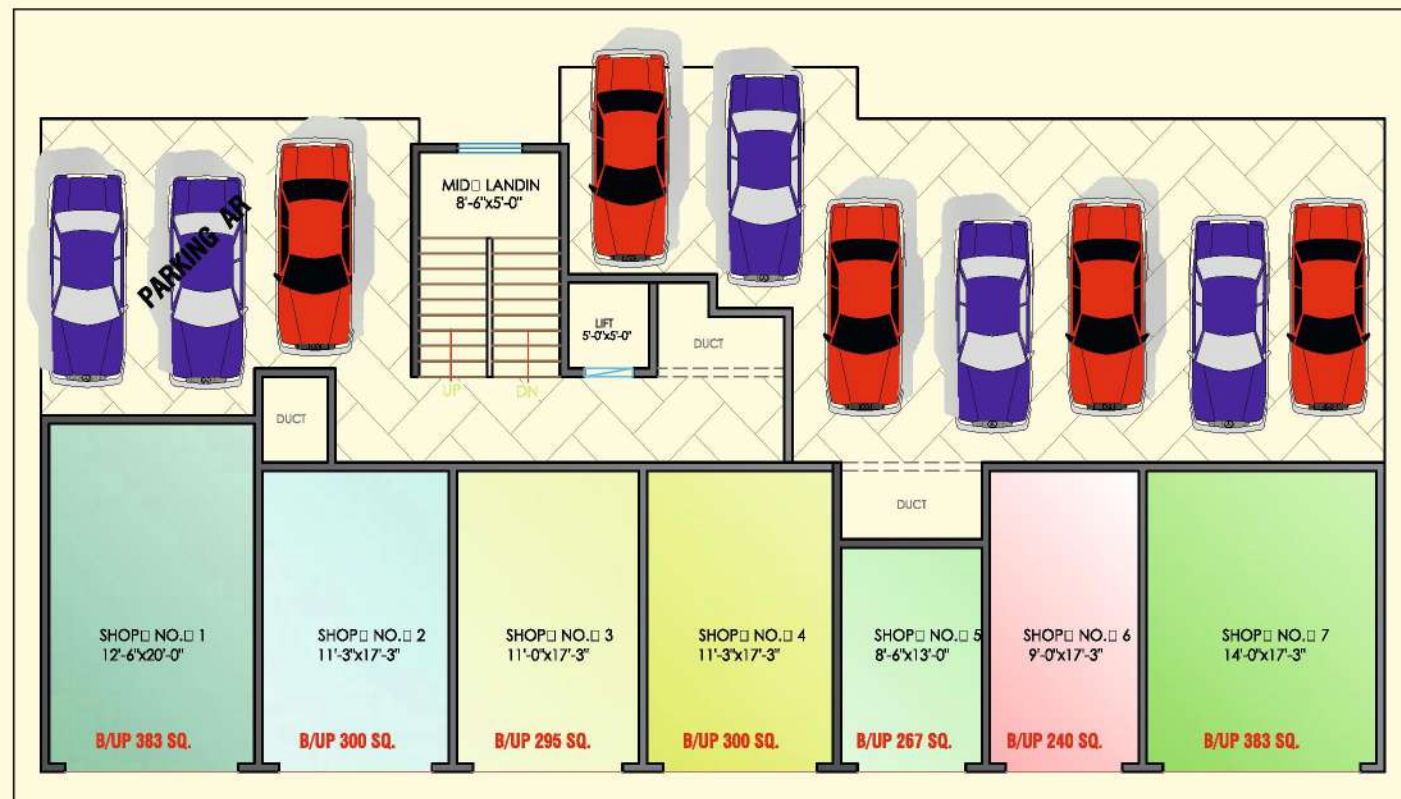


**TIRUMALA
ENTERPRISES**

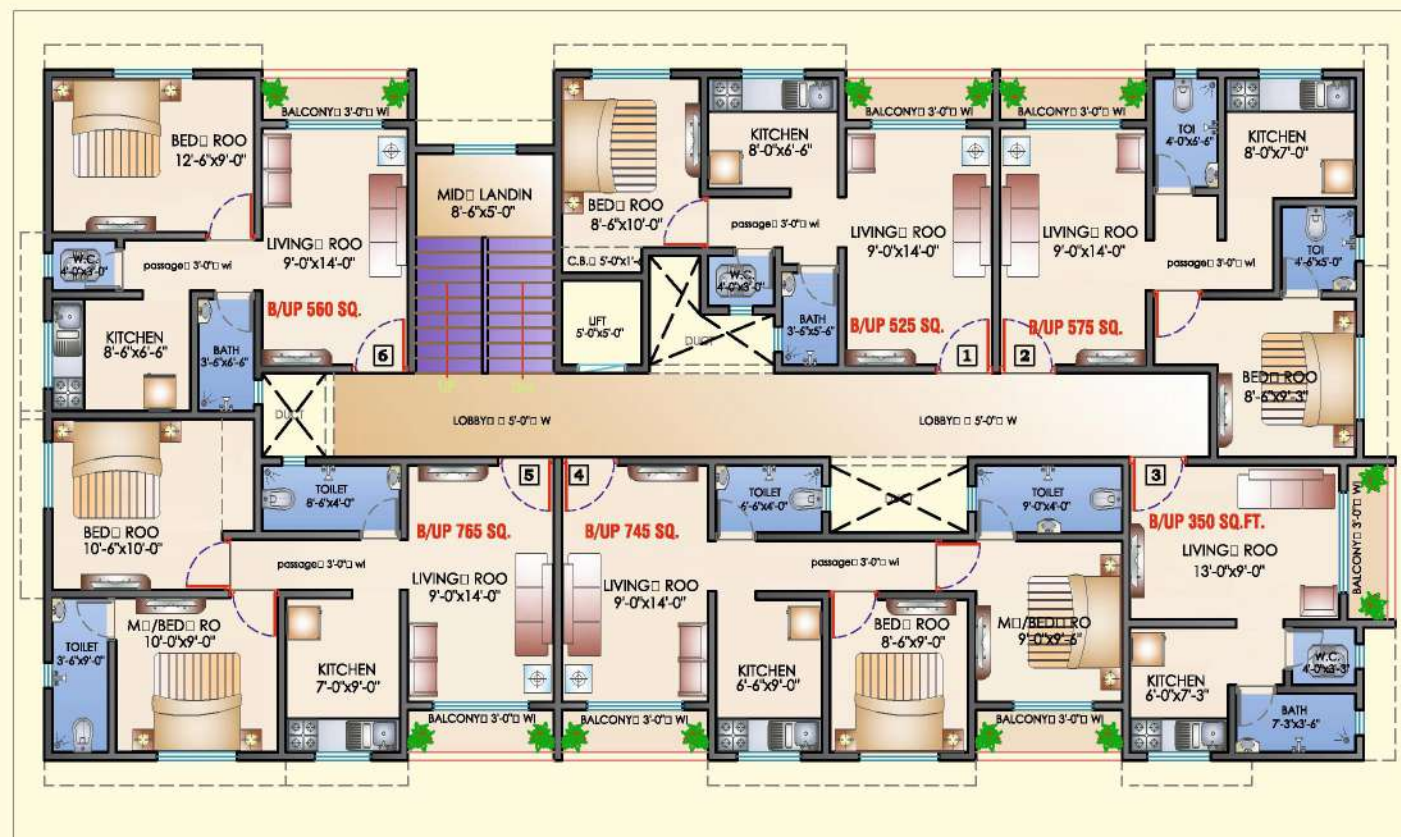
Your home at Tirumala Estate is filled with serenity and peace, where you leave all your worldly worries at your doorstep. Enjoy the uniqueness of living in Thane along with the pleasure of being with nature and the world around you.

PROJECT FEATURES

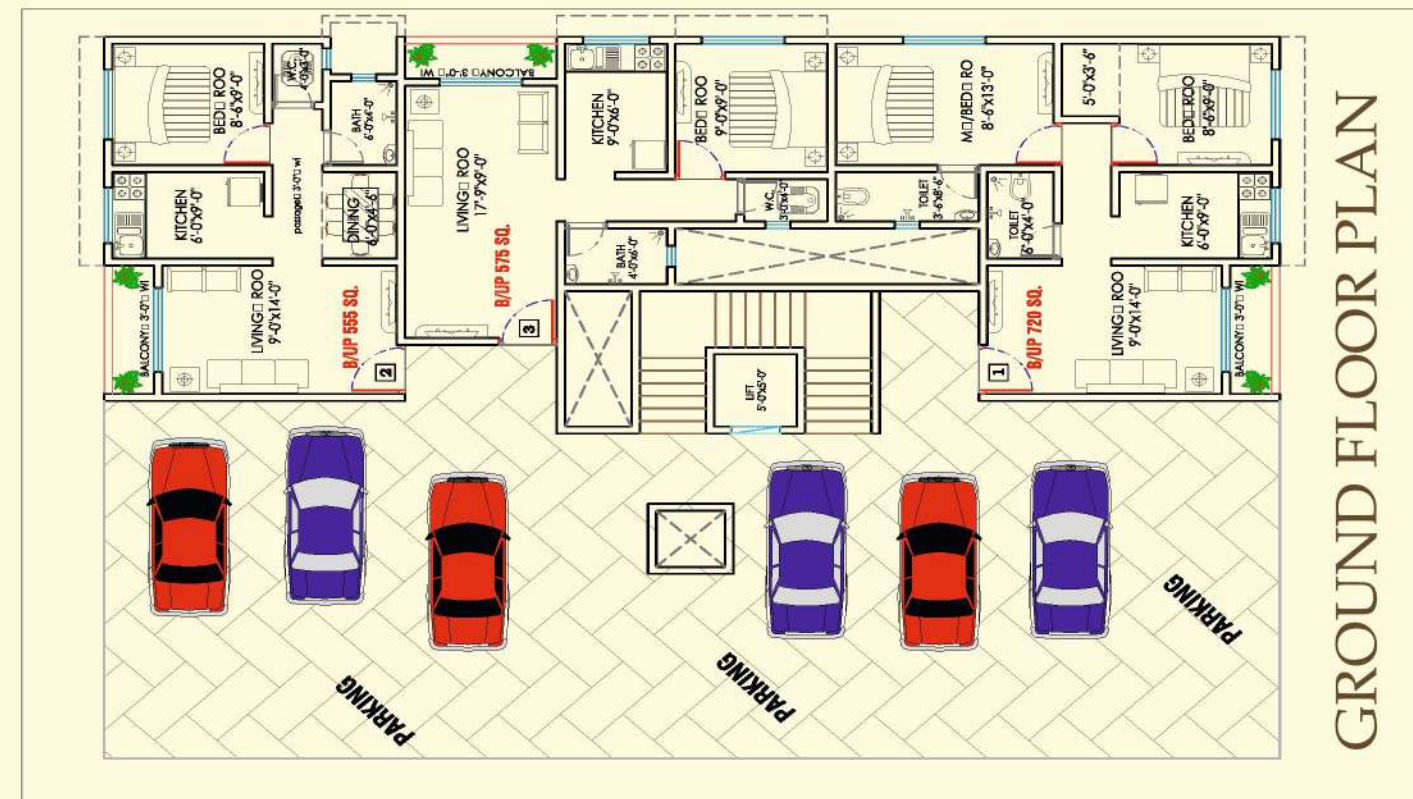
1 RK, 1 BHK and 2 BHK Flats, 5 Buildings
Registered Society
Consisting of part Stilt + 3 Storeys
Branded Lifts per Building
Stilt Parking



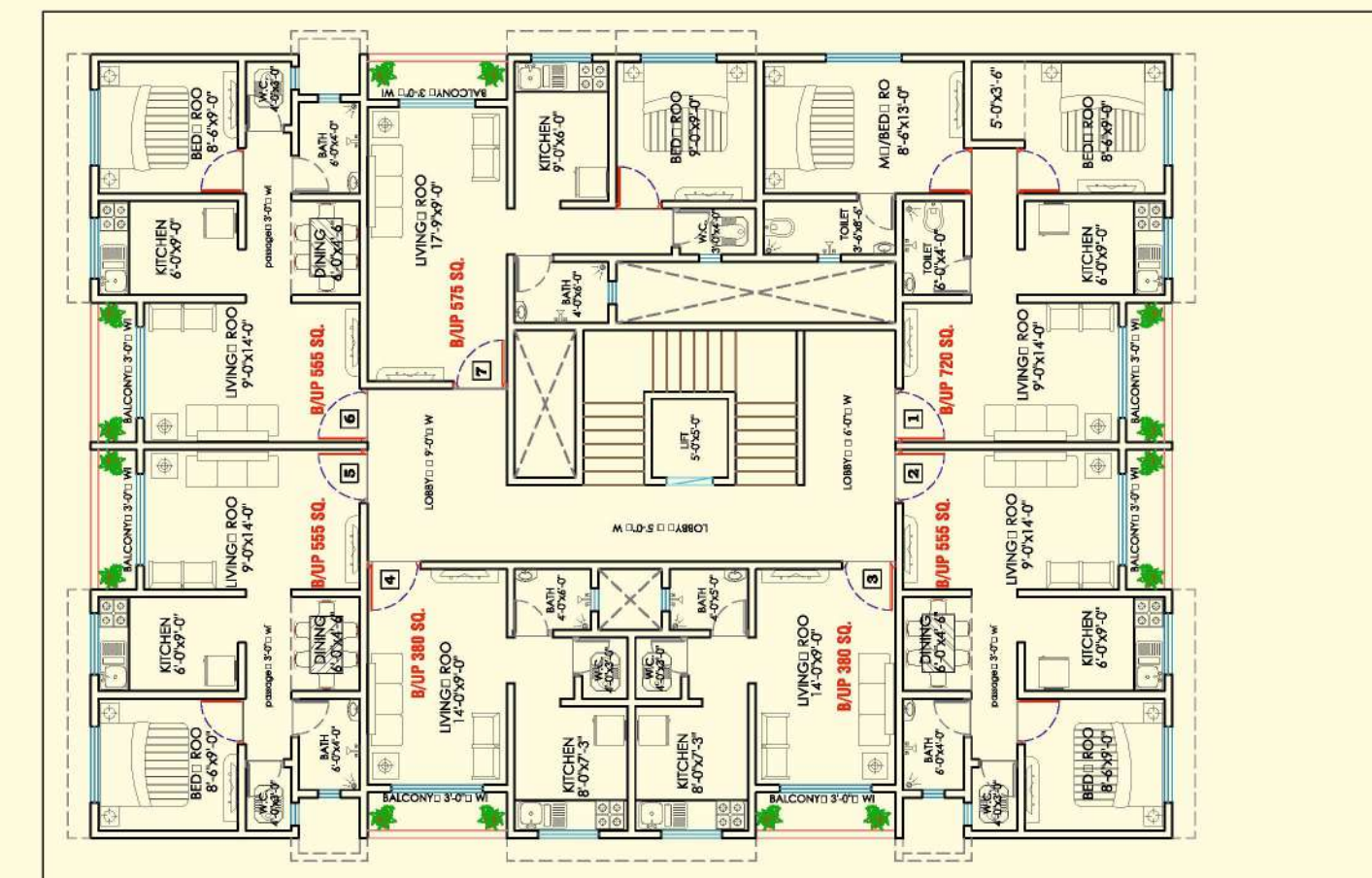
GROUND FLOOR PLAN



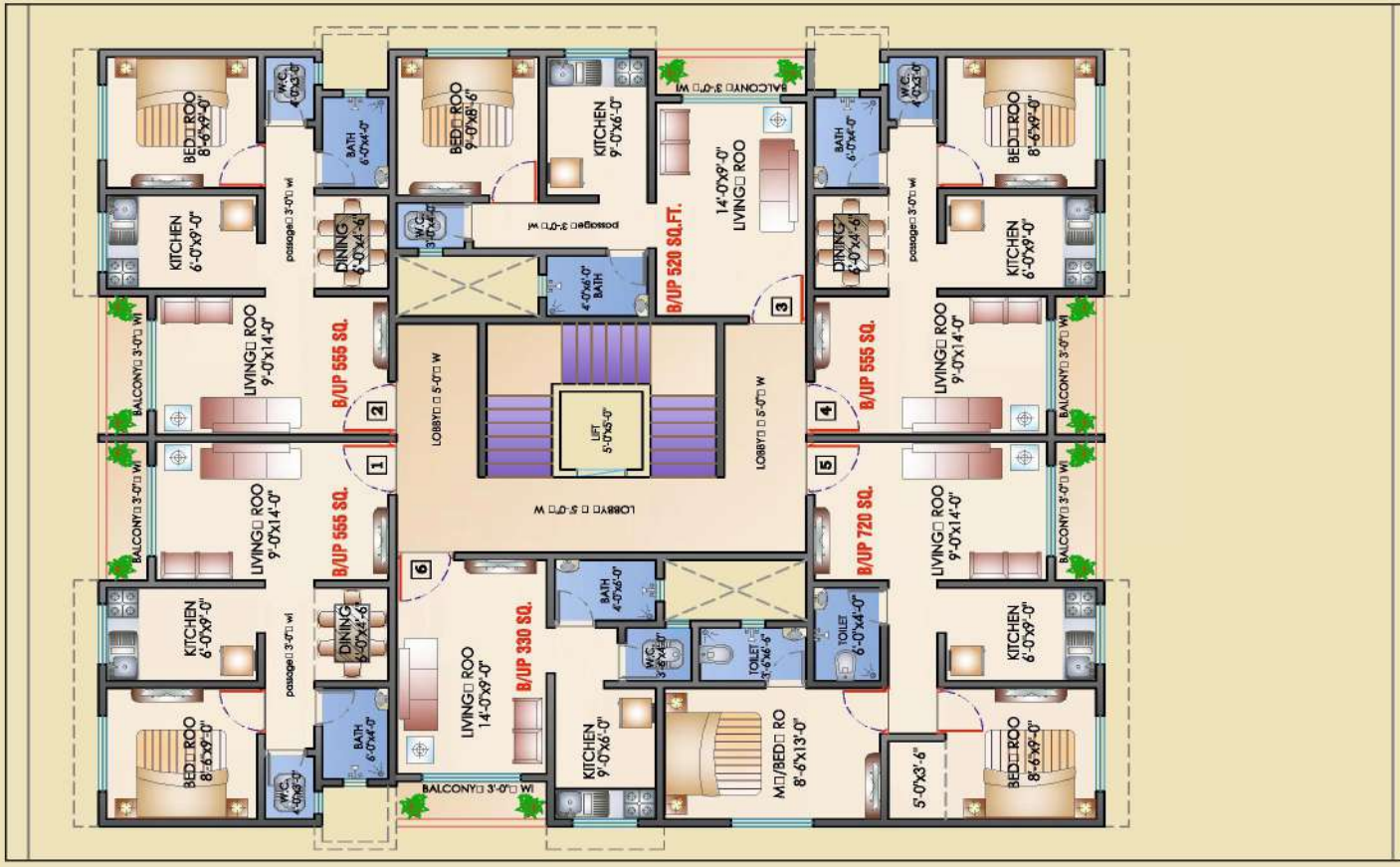
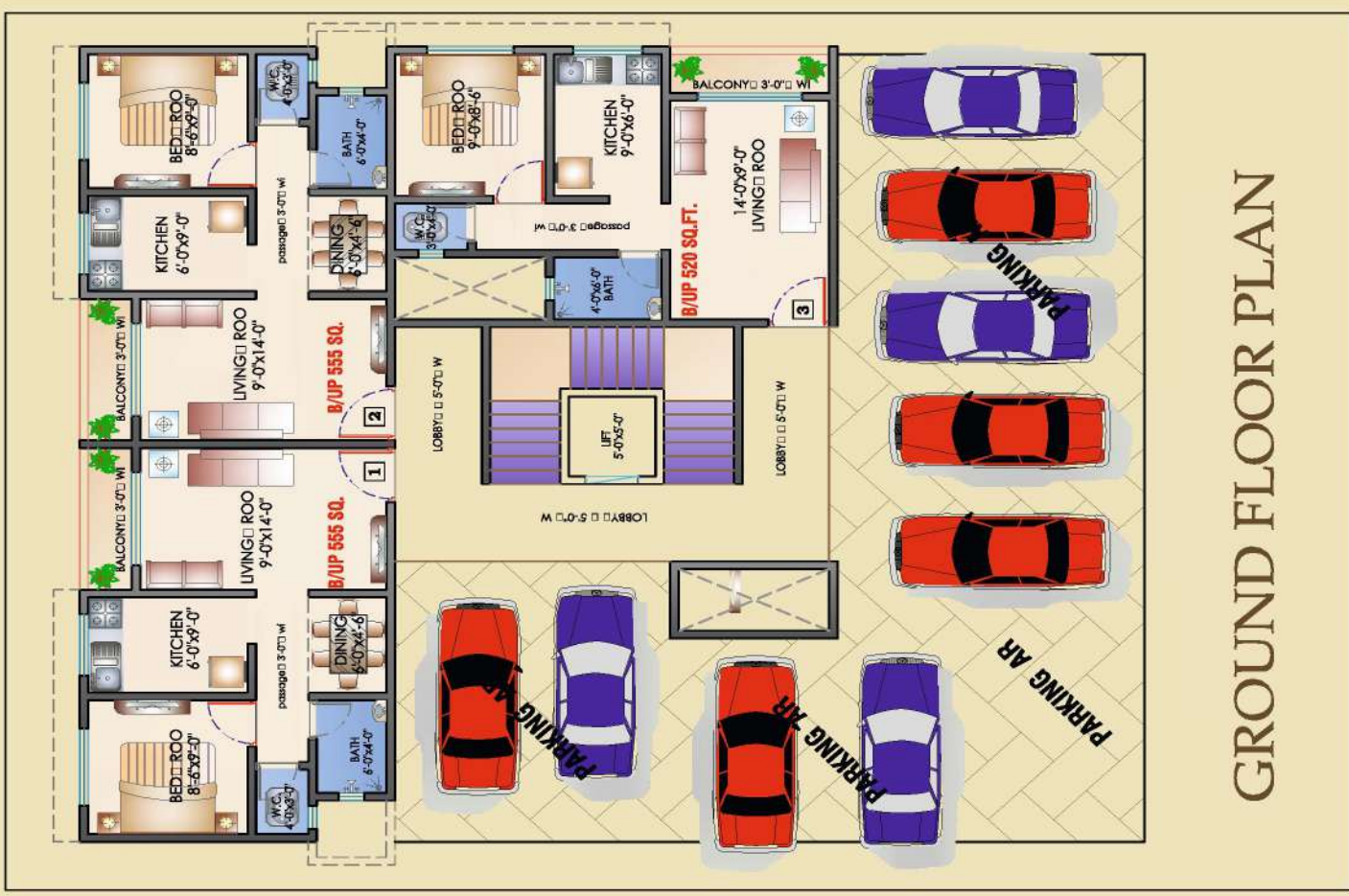
TYPICAL FLOOR PLAN 1 TO 3 FLOOR
A & E - WING



GROUND FLOOR PLAN



TYPICAL FLOOR PLAN 1 TO 3 FLOOR
B - WING



TYPICAL FLOOR PLAN 1 TO 3 FLOOR
C - WING

TYPICAL FLOOR PLAN 1 TO 3 FLOOR
D - WING